

# ADVANCED MACHINE GUARDING SOLUTIONS

Safety Guarding Made Simple.



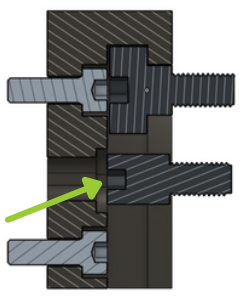
800-569-9801 | [evolutionmotion.com](http://evolutionmotion.com)

# SAFETY GUARDING MADE SIMPLE

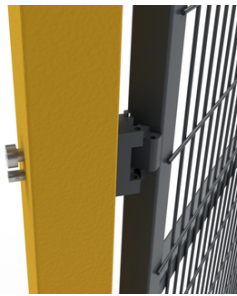
- Quick Connect Panel and Post Fitting System
- Standard heights and widths
- Easy to access 3D models with an online custom panel configurator
- Panel post leveling options
- Pre-Assembled doors with different interlock manufacturers options
- Integrated light curtain options
- Perimeter wireway
- Custom cabling for safety electronics



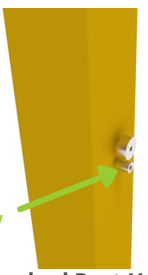
Pre-Attached Panel Hardware



Cut-away of Panel and Post Fitting System



Hinged Panel and Post Hardware



Pre-Attached Post Hardware

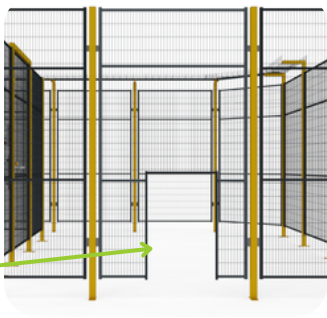
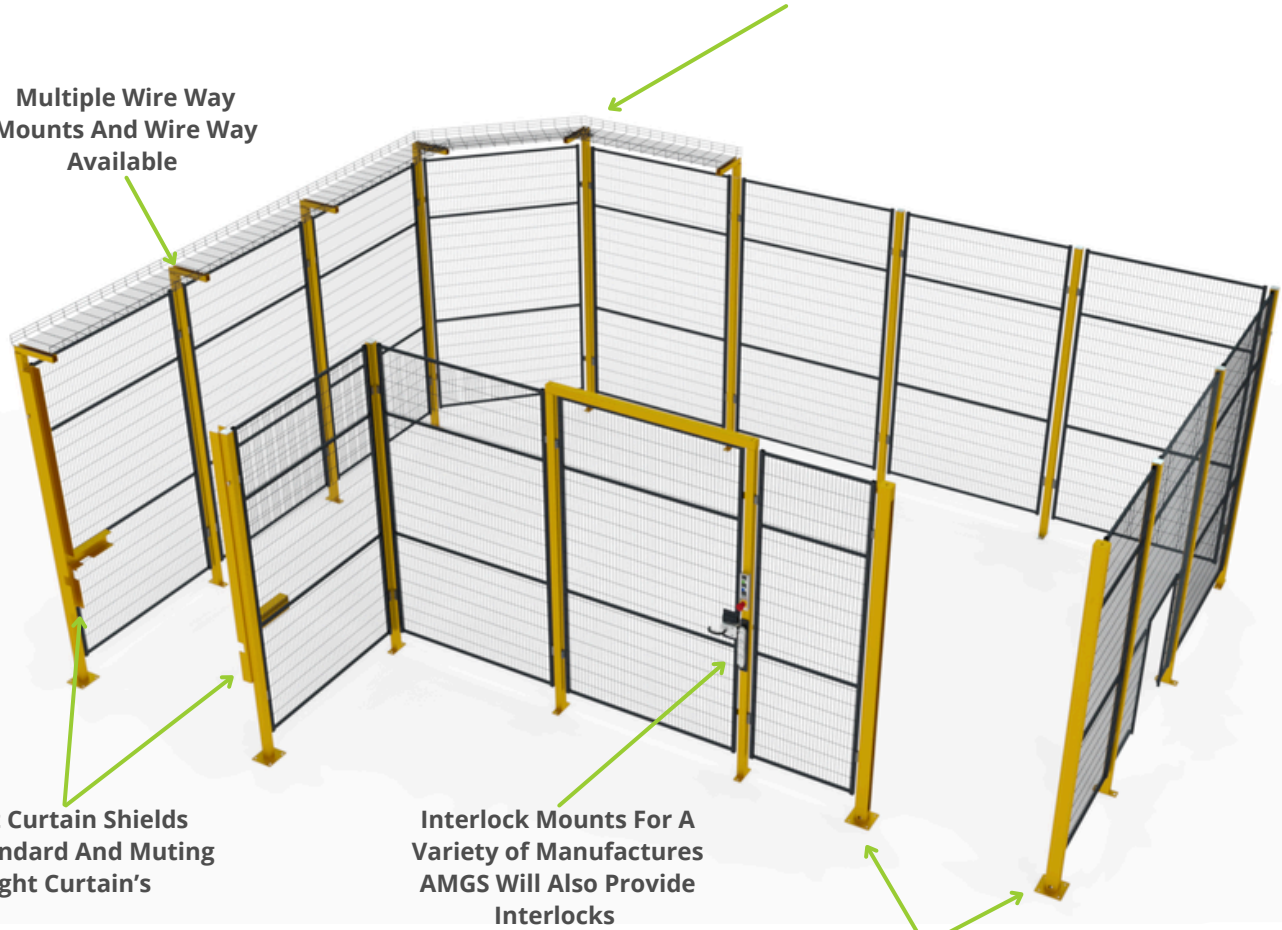
Multiple Wire Way Mounts And Wire Way Available

Light Curtain Shields For Standard And Muting Light Curtain's

Interlock Mounts For A Variety of Manufactures AMGS Will Also Provide Interlocks

3"x3"x1/4" Heavy Duty Light Curtain Posts

Custom Cut-Out Panels Done At The Factory Per Customer's Print

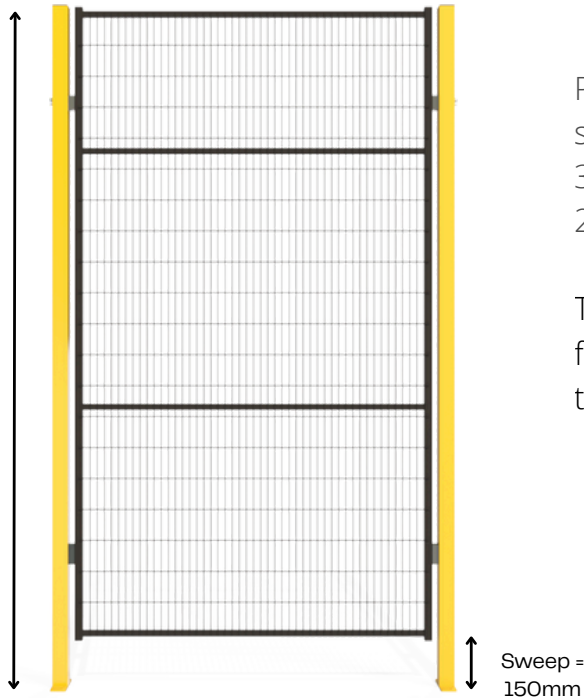


# Wire Mesh Panels

System Width = Center to Post to Center of Post



System Height = Floor To Top Of Panel And Post



Panel frames are fully welded 16 gauge tube steel. The spot welded wire mesh is made of 3mm diameter steel wire with a grid spacing of 20mm x 100mm.

The system width measurement is measured from the center of one post to the center of the other post.

PAW-22 1500 WSR

**Panel Media**

W = Wire Mesh

P= Polycarb

S= Sheet metal

**System Height Options:**

**System Width Options:**

**Weld Screen Option**

-Blank-

WSR= Weld Screen Red

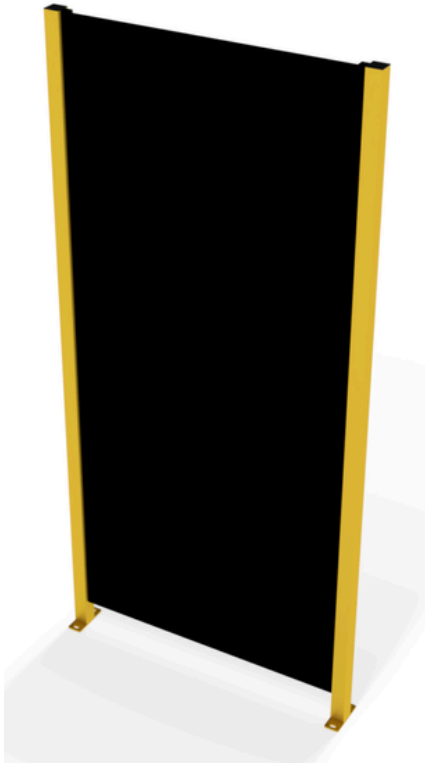
WSB= Weld Screen Blue

WSG= Weld Screen Green

## System Height

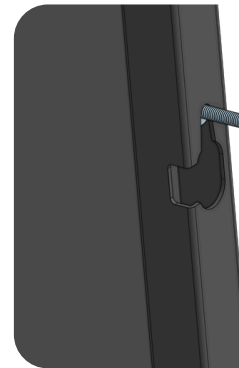
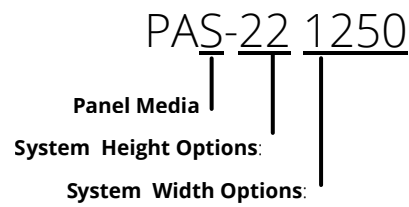
System Width	1200	1400	1600	1800	2200	2700
250	159mmx1050mm	159mmx1250mm	159mmx1450mm	159mmx1650mm	159mmx2050mm	159mmx2550mm
300	209mmx1050mm	209mmx1250mm	209mmx1450mm	209mmx1650mm	209mmx2050mm	209mmx2550mm
400	309mmx1050mm	309mmx1250mm	309mmx1450mm	309mmx1650mm	309mmx2050mm	309mmx2550mm
500	409mmx1050mm	409mmx1250mm	409mmx1450mm	409mmx1650mm	409mmx2050mm	409mmx2550mm
600	509mmx1050mm	509mmx1250mm	509mmx1450mm	509mmx1650mm	509mmx2050mm	509mmx2550mm
700	609mmx1050mm	609mmx1250mm	609mmx1450mm	609mmx1650mm	609mmx2050mm	609mmx2550mm
750	659mmx1050mm	659mmx1250mm	659mmx1450mm	659mmx1650mm	659mmx2050mm	659mmx2550mm
800	709mmx1050mm	709mmx1250mm	709mmx1450mm	709mmx1650mm	709mmx2050mm	709mmx2550mm
900	809mmx1050mm	809mmx1250mm	809mmx1450mm	809mmx1650mm	809mmx2050mm	809mmx2550mm
1000	909mmx1050mm	909mmx1250mm	909mmx1450mm	909mmx1650mm	909mmx2050mm	909mmx2550mm
1250	1159mmx1050mm	1159mmx1250mm	1159mmx1450mm	1159mmx1650mm	1159mmx2050mm	1159mmx2550mm
1500	1409mmx1050mm	1409mmx1250mm	1409mmx1450mm	1409mmx1650mm	1409mmx2050mm	1409mmx2550mm
1750	1659mmx1050mm	1659mmx1250mm	1659mmx1450mm	1659mmx1650mm	1659mmx2050mm	1659mmx2550mm
2000	1909mmx1050mm	1909mmx1250mm	1909mmx1450mm	1909mmx1650mm	1909mmx2050mm	1909mmx2550mm

# Solid Sheet Metal Panels



The Solid Sheet Metal Panels are made with a fully welded 16 gauge tubular frame. 16G sheet metal is laser welded flush with the tubular frame. The frames have a unique tear-drop cut-out allowing the panels to be easily assembled with the posts.

The system width measurement is measured from the center of one post to the center of the other post.



Tear-Drop Cut-Out for quick assembly

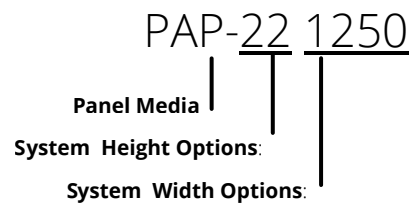
Solid Sheetmetal Panel System Height						
System Width	1200	1400	1600	1800	2200	2700
250	159mmx1050mm	159mmx1250mm	159mmx1450mm	159mmx1650mm	159mmx2050mm	159mmx2550mm
300	209mmx1050mm	209mmx1250mm	209mmx1450mm	209mmx1650mm	209mmx2050mm	209mmx2550mm
400	309mmx1050mm	309mmx1250mm	309mmx1450mm	309mmx1650mm	309mmx2050mm	309mmx2550mm
500	409mmx1050mm	409mmx1250mm	409mmx1450mm	409mmx1650mm	409mmx2050mm	409mmx2550mm
600	509mmx1050mm	509mmx1250mm	509mmx1450mm	509mmx1650mm	509mmx2050mm	509mmx2550mm
700	609mmx1050mm	609mmx1250mm	609mmx1450mm	609mmx1650mm	609mmx2050mm	609mmx2550mm
750	659mmx1050mm	659mmx1250mm	659mmx1450mm	659mmx1650mm	659mmx2050mm	659mmx2550mm
800	709mmx1050mm	709mmx1250mm	709mmx1450mm	709mmx1650mm	709mmx2050mm	709mmx2550mm
900	809mmx1050mm	809mmx1250mm	809mmx1450mm	809mmx1650mm	809mmx2050mm	809mmx2550mm
1000	909mmx1050mm	909mmx1250mm	909mmx1450mm	909mmx1650mm	909mmx2050mm	909mmx2550mm
1250	1159mmx1050mm	1159mmx1250mm	1159mmx1450mm	1159mmx1650mm	1159mmx2050mm	1159mmx2550mm

# Polycarbonate Panels



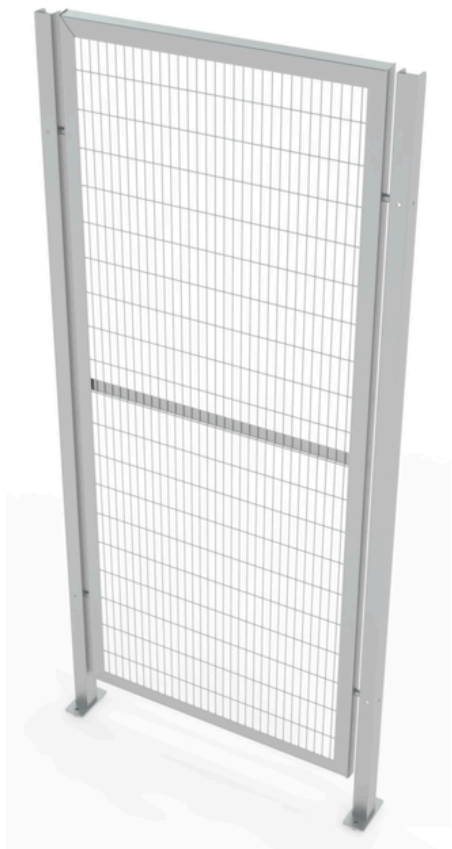
The Polycarbonate Panels are made with a fully welded 16 gauge tubular frame. Clear 6MM polycarbonate panels are secured to the steel frame with screws. Tinted polycarbonate can also be supplied.

The system width measurement is measured from the center of one post to the center of the other post.



Polycarb Panel System Height					
System Width	1200	1400	1600	1800	2200
250	159mmx1050mm	159mmx1250mm	159mmx1450mm	159mmx1650mm	159mmx2050mm
300	209mmx1050mm	209mmx1250mm	209mmx1450mm	209mmx1650mm	209mmx2050mm
400	309mmx1050mm	309mmx1250mm	309mmx1450mm	309mmx1650mm	309mmx2050mm
500	409mmx1050mm	409mmx1250mm	409mmx1450mm	409mmx1650mm	409mmx2050mm
600	509mmx1050mm	509mmx1250mm	509mmx1450mm	509mmx1650mm	509mmx2050mm
700	609mmx1050mm	609mmx1250mm	609mmx1450mm	609mmx1650mm	609mmx2050mm
750	659mmx1050mm	659mmx1250mm	659mmx1450mm	659mmx1650mm	659mmx2050mm
800	709mmx1050mm	709mmx1250mm	709mmx1450mm	709mmx1650mm	709mmx2050mm
900	809mmx1050mm	809mmx1250mm	809mmx1450mm	809mmx1650mm	809mmx2050mm
1000	909mmx1050mm	909mmx1250mm	909mmx1450mm	909mmx1650mm	909mmx2050mm
1250	1159mmx1050mm	1159mmx1250mm	1159mmx1450mm	1159mmx1650mm	1159mmx2050mm

# Stainless Steel Panels, Posts and Doors

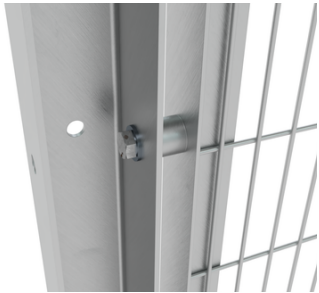


The rigid stainless steel wire mesh panels and posts are made from grade 304 sheets and wire. Post and panel connection has a 20mm stand-off with a 5/16-18 internal thread. All hex bolts and washers are 304 grade steel.

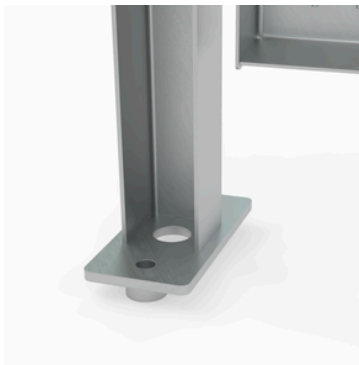
Laser welded construction and glass bead finish.

A variety of single and double hinged doors are available.

The system width measurement is measured from the center of one post to the center of the other post.



Hex Bolt Construction For Ease Assembly



1/4" Thick Post Foot With 1/2" Thick Stand-offs At The Anchoring Point

## Stainless Steel Wire Mesh System Height

System Width	1800	2200
250	159mmx1650mm	159mmx2050mm
400	309mmx1650mm	309mmx2050mm
500	409mmx1650mm	409mmx2050mm
700	609mmx1650mm	609mmx2050mm
750	659mmx1650mm	659mmx2050mm
800	709mmx1650mm	709mmx2050mm
1000	909mmx1650mm	909mmx2050mm
1250	1159mmx1650mm	1159mmx2050mm
1500	1409mmx1650mm	1409mmx2050mm

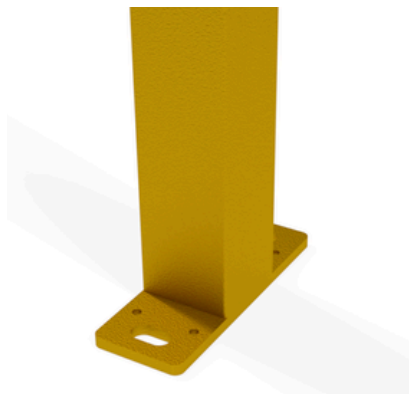
# Posts

Guarding Posts are made from 2"x 2" x 14 gauge tube steel, and are robotically welded to the foot pad for a robust solution.

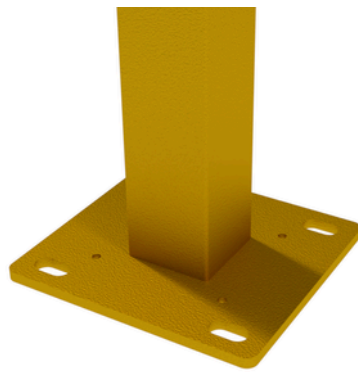
Welded post designs include (4) M6 jack-screws that thread into the foot for leveling (Max12mm) and 2-4 clearance holes for 3/8" anchors. All Posts comes with zinc plated shim.

Standard Power Coated Color is Safety Yellow (RAL1018)  
Custom Colors Available.

## Pre-Assembled To The Posts



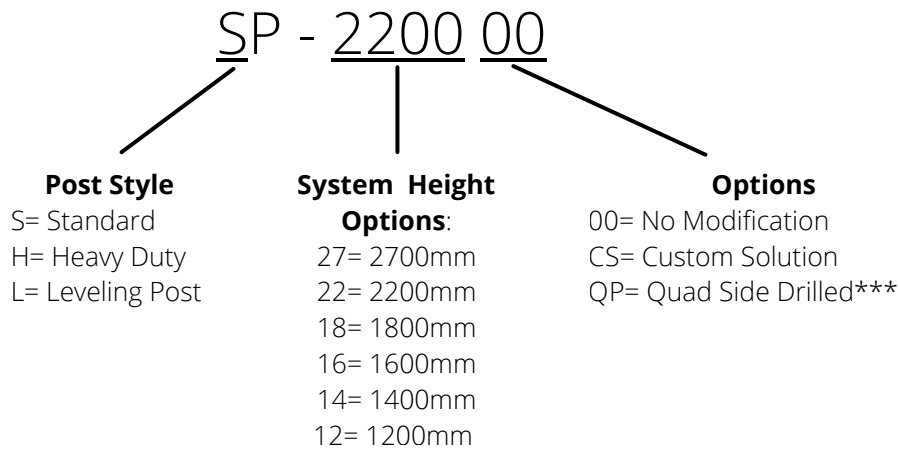
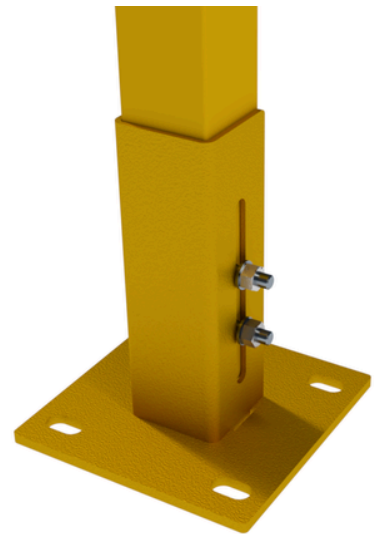
Welded Standard Post



Welded Heavy Duty Post  
\*Used with wide doors\*

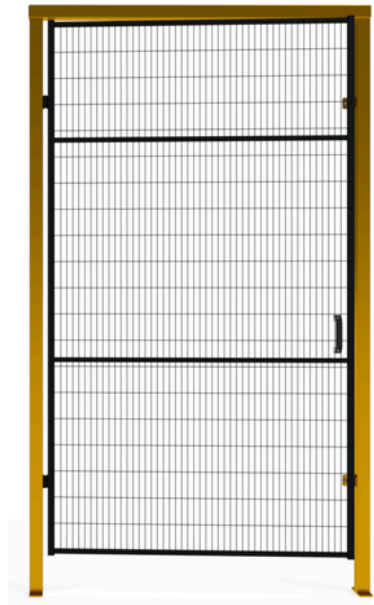


Leveling Post Standard and Heavy Duty  
\*Adjustable up to 2 1/2" \*



\*\*\* = Only Use When 4 panels need to be mounted to the post

# Single and Double Hinged Doors



The door hand is based on the hinge location. Right Hand (hinges on right post)

Hinged doors come assembled with options selected below. Post hardware to attach panels are included. See interlock and electronic options for brands and style of interlocks available

**DSHW - 22 1500 L 1 WSR PB2**

**Door Style**

S= Single Hinge  
D= Double Hinge

**Panel Media**

W = Wire Mesh  
P= Polycarb  
S= Sheet metal

**System Height Options:**

27= 2700mm  
22= 2200mm

**System Width Options:**

3000= 3000mm (DD Only)  
2500= 2500mm (DD Only)  
2000= 2000mm (DD Only)  
1500= 1500mm (SD and DD)  
1250= 1250mm (SD Only)  
1000= 1000mm (SD Only)  
0900= 900mm (SD Only)  
0800= 800mm (SD Only)  
0750= 750mm (SD Only)

**Door Hand**

D= Double  
L= Left Hand  
R= Right Hand

**Push Button Pendant**

-Blank-  
PB = Push Button Station

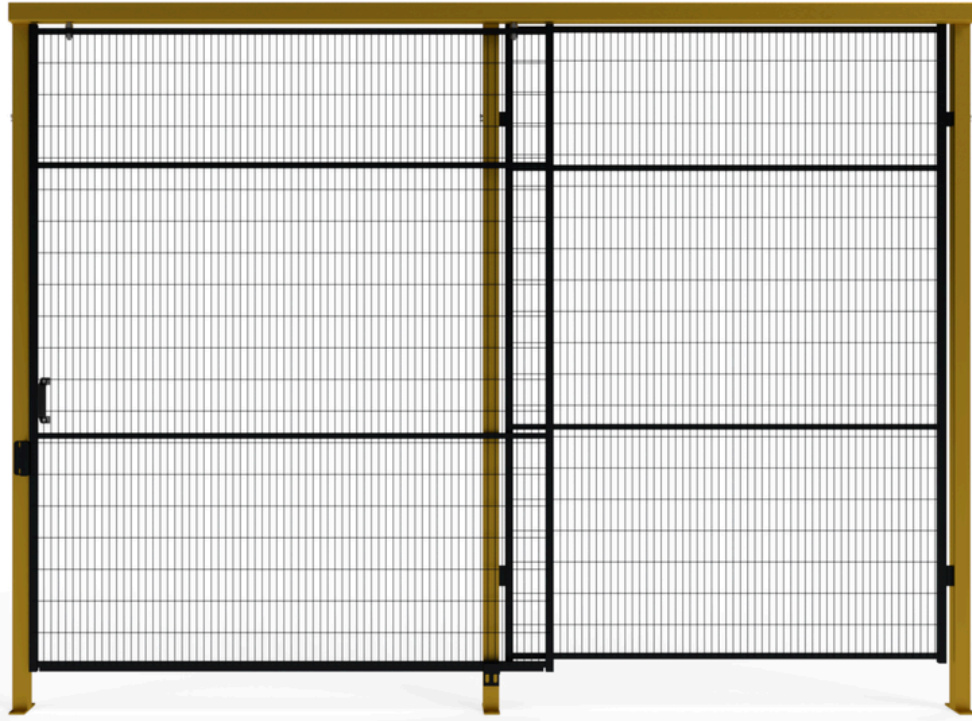
**Weld Screen Option**

-Blank-  
WSR= Weld Screen Red  
WSB= Weld Screen Blue  
WSG= Weld Screen Green

**Door Handle Styles**

1= Standard Handle  
2= Customer Specified Interlock Mount  
3= Slide Handle

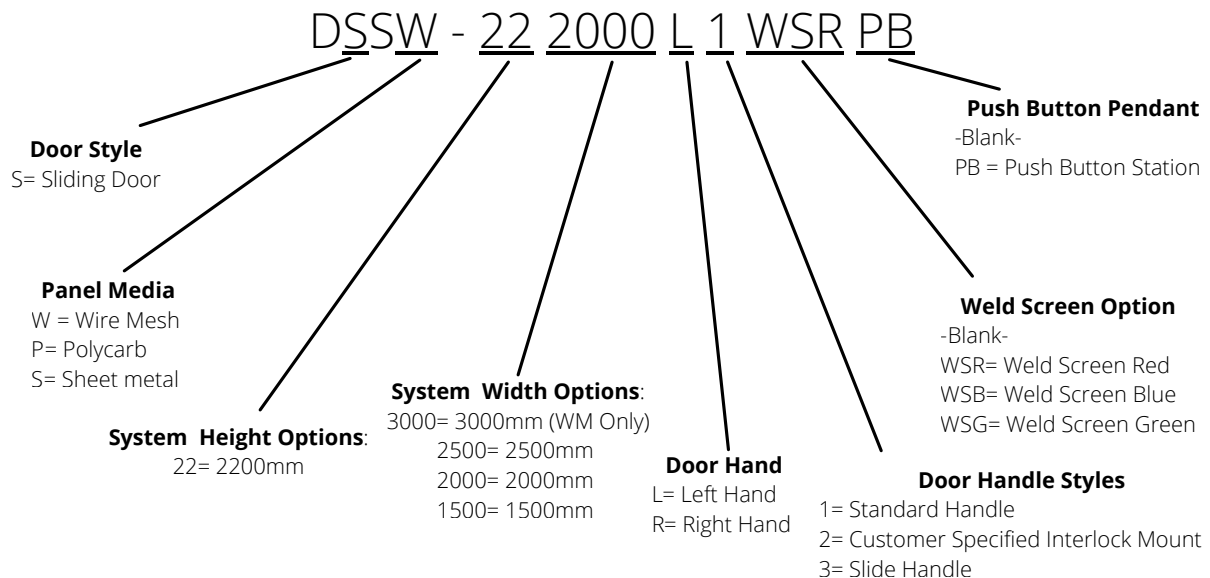
# Sliding Door



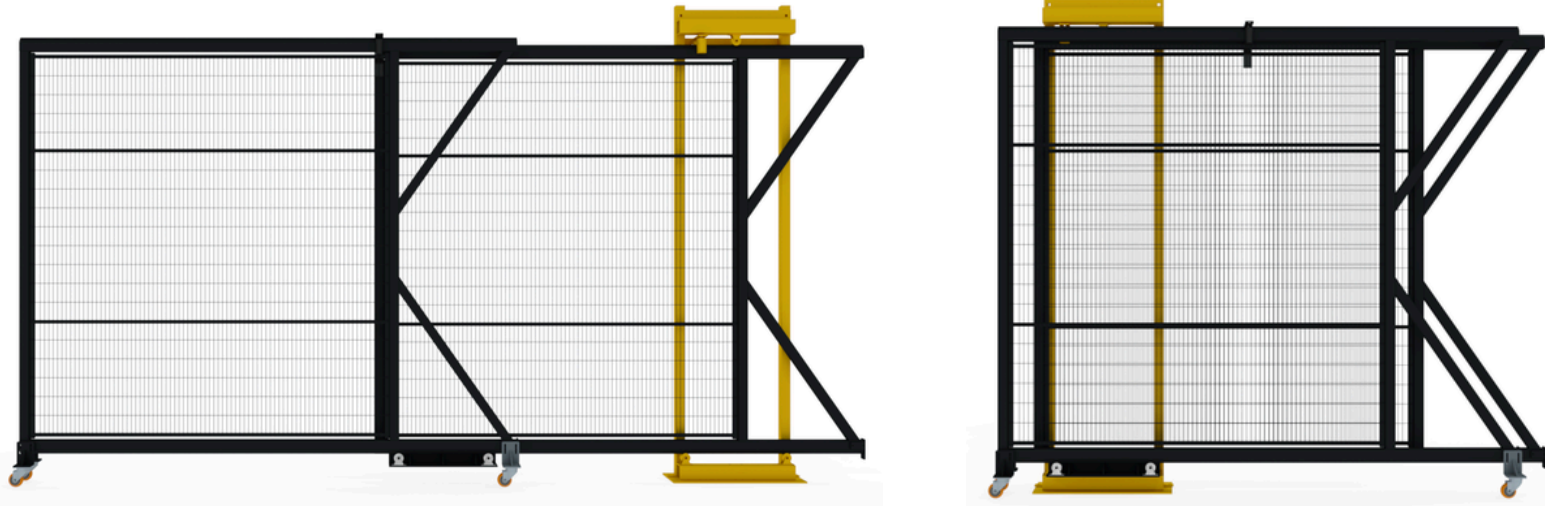
Shown as a right hand door  
with 01 type handle



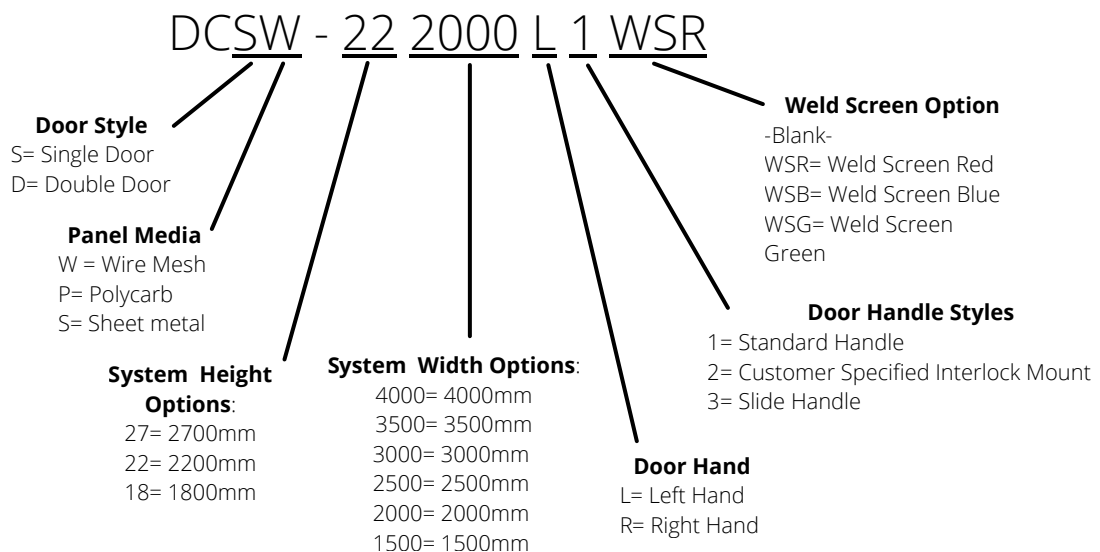
Sliding doors come assembled with options selected below.  
Post hardware to attach panels are included. See interlock  
and electronic options for brands and style of interlocks available



# Cantilever Sliding Door



Cantilevered sliding doors come assembled with options selected below. These sliding doors are a great option for large openings with no overhead obstructions. All size options are available with wire mesh. Check with the factory on sizes available with polycarb or sheet metal. Post hardware to attach panels are included. See interlock and electronic options for brands and style of interlocks available.



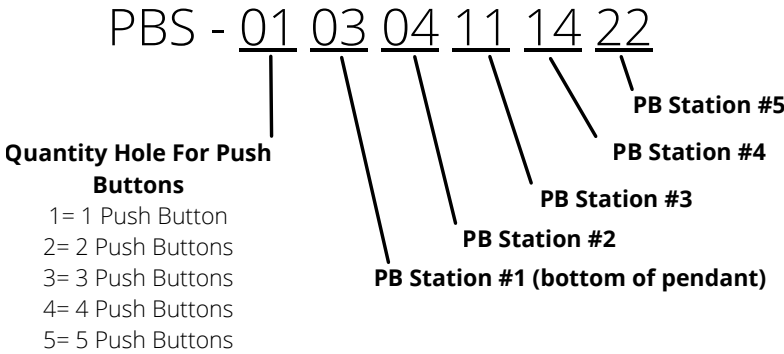
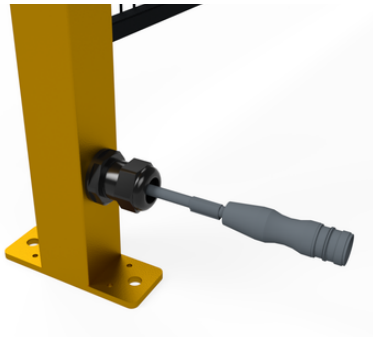
# Push Button Pendants



Push Button Pendants can be ordered with all of AMGS doors and can also be ordered on standard posts for locating push buttons around your guarding.

Each push button pendant requires a multi connector quick connect system as in the picture. (Two sizes offered based on how many push buttons selected- M12 12Pin or M23 19 Pin)

*Note: It is not recommended to have doors with push button pendants located on the corner of an assembly because the multi-connector will impede mounting a panel to the back of the post*

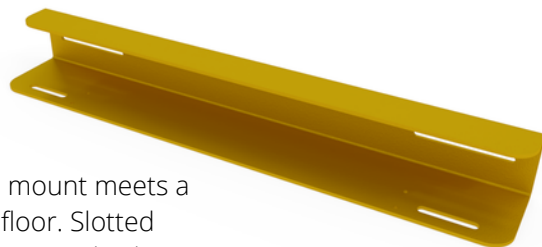


Push Button Options		
01	Emergency Stop Non Illuminated Twist Pull 2 NC Contacts	12 Pilot Light-Green
02	Momentary Push Button-Green Non Illuminated	13 Pilot Light-Blue
03	Momentary Push Button-Green Illuminated	14 Pilot Light-Amber
04	Momentary Push Button-Blue Non Illuminated	15 Pilot Light-White
05	Momentary Push Button-Blue Illuminated	16 Pilot Light-Red
06	Momentary Push Button-Amber Non Illuminated	17 Keyed 2 Position Selector Switch Maintained 1 N/O Contact
07	Momentary Push Button-Amber Illuminated	18 Keyed 2 Position Selector Switch Maintained 2 N/O Contacts
08	Momentary Push Button-White Illuminated	19 2 Position Selector Switch Maintained 1 N/O Contact
09	Momentary Push Button-White Non ILL	20 2 Position Selector Switch Momentary 2 N/O Contacts
10	Momentary Push Button-Red Illuminated	21 3 Position Selector Switch Momentary 2 N/O Contacts
11	Momentary Push Button-Red Non ILL	22 Blank Plug

# Light Curtain Mounts

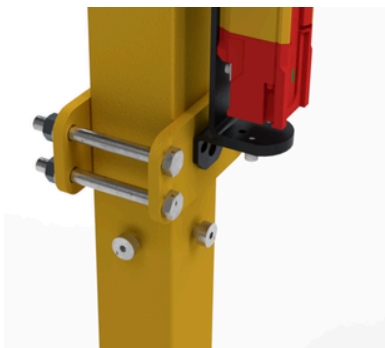
Light Curtain Post is laser cut from 3"x 3" x1/4" tube steel and robotically welded to the foot pad. The foot pad has (4) M6 threaded jack screws to assist with leveling and 3/8" anchor clearance holes. Only available in System Height 1800, 2200, and 2700

**Part Number** CP-270000 Standard 2200mm Light Curtain Post  
CP-2700CS Customized 2200mm Light Curtain Post  
CP-220000 Standard 2200mm Light Curtain Post  
CP-2200CS Customized 2200mm Light Curtain Post  
CP-180000 Standard 2200mm Light Curtain Post  
CP-1800CS Customized 2200mm Light Curtain Post



Floor mount for light curtains. 1/4" bent steel mount meets a rigid mount requirement for mounting to the floor. Slotted holes for anchor bolts. Consult factory for customized solutions per light curtain brand. Standard length come in 1000mm and 1250mm. Other sizes available

**Part Number** CF-1000 Standard 1000mm  
CF-1250 Standard 1250mm

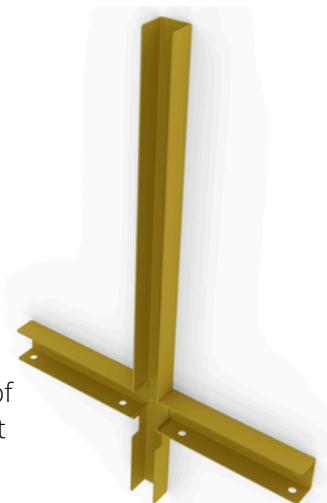


Adjustable light curtain mounting brackets. Used with our standard guarding post. This clamping design allows for the light curtain to slide up and down the post for alignment. This mount works great for a muting light curtain system as shown in the picture.

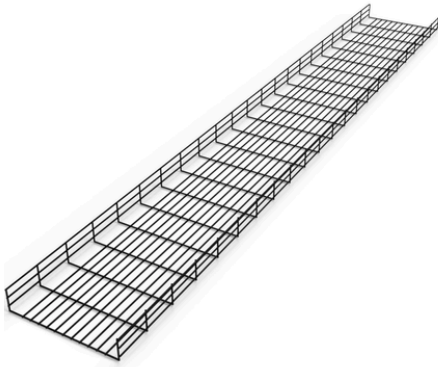
Consult factory for specific light curtain brand mounting patterns.

**Part Number** ADJ-LCMOUNT

Custom made muting light curtain mounts and custom made light curtain protectors are available through AMGS. Because of all the different manufactures and options customer can select from it's best to contact the factory with the brand and model number of the light curtain and muting sensors.

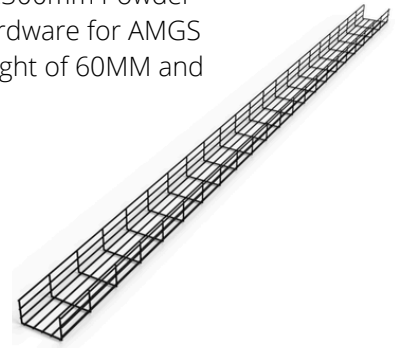


# Wireway and Wireway Mounts



Powder coated wireway. Stocked length of 2300mm Powder Coated AMGS standard black. Mounting hardware for AMGS wireway mounts are included. Standard height of 60MM and three stocked widths of 60,100, and 300mm

**Part Number** WW-60-60-2300  
**Part Number** WW-60-100-2300  
**Part Number** WW-60-300-2300



Powder coated basic wireway Mount. Available in 100mm and 300mm lengths. These mounts are meant to be secured directly to an AMGS post with 10mm threaded plugs. These mounts can be used straight or angled on a corner post.

**Part Number** WW-ADJ-100  
**Part Number** WW-ADJ-300



**AMGS offers a variety of different style of wireway mounts and Unistrut mounts. These mounts can be configured on our website to download 3D CAD models and configured part numbers.**

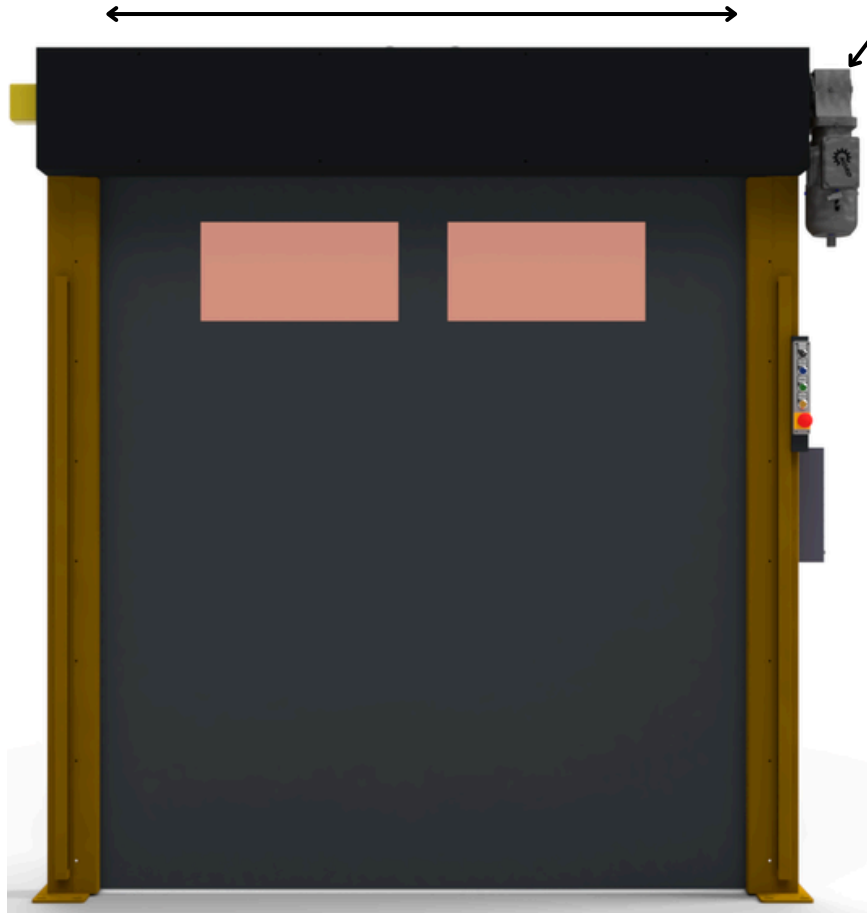


# High Speed Roll Up Safety Door

System Width = The Inside  
Measurement of the Post Guards  
\*\* See Chart For Standard Width\*\*  
\*\*Custom Sizes Available\*\*

Geared Motor Can be  
Rotated in 90 Degree  
Intervals And It Can  
Be Mounted On The  
Left Or Right Side

System Height =  
Floor To Just Below  
The Roller Guarding  
Standard Height's Are  
2.2M, 2.7M, 3.25M &  
3.65M  
\*\*Custom Sizes  
Available\*\*



Door System Height				
Width	2200	2700	3250	3650
1250	2197mmx994mm	2697mmx994mm	3247mmx994mm	3647mmx994mm
1500	2197mmx1244mm	2697mmx1244mm	3247mmx1244mm	3647mmx1244mm
1750	2197mmx1494mm	2697mmx1494mm	3247mmx1494mm	3647mmx1494mm
2000	2197mmx1744mm	2697mmx1744mm	3247mmx1744mm	3647mmx1744mm
2500	2197mmx2244mm	2697mmx2244mm	3247mmx2244mm	3647mmx2244mm
3000	2197mmx2744mm	2697mmx2744mm	3247mmx2744mm	3647mmx2744mm
3250	2197mmx2994mm	2697mmx2994mm	3247mmx2994mm	3647mmx2994mm
3500	2197mmx3244mm	2697mmx3244mm	3247mmx3244mm	3647mmx3244mm
4000	2197mmx3744mm	2697mmx3744mm	3247mmx3744mm	3647mmx3744mm
4500	2197mmx4244mm	2697mmx4244mm	3247mmx4244mm	3647mmx4244mm
4750	2197mmx4494mm	2697mmx4494mm	3247mmx4494mm	3647mmx4494mm
5000	2197mmx4744mm	2697mmx4744mm	3247mmx4744mm	3647mmx4744mm

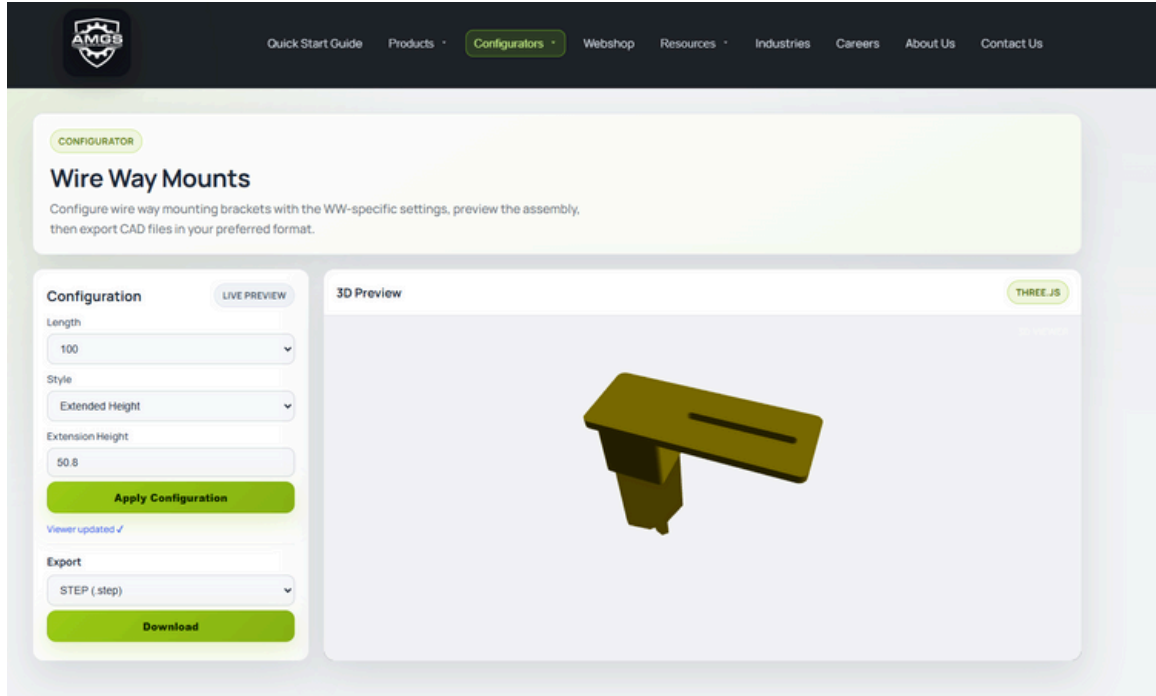
PWROLLDOOR-2200-3000-MR-CONO-LC-00

System Height | System Width | Motor Side (R or L) | Control Package | Window Option | Light Curtain Option

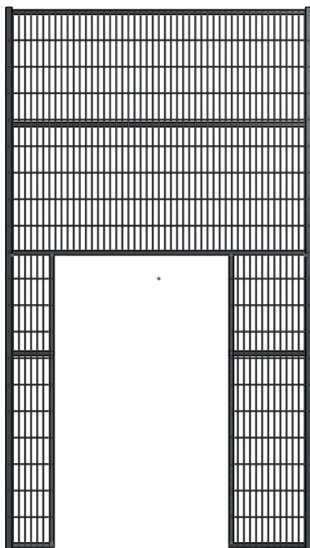
0 = None  
1 = Integrator Package  
2 = Full Safety PLC Controls W/ VFD  
00 = None  
01 = Red  
02 = Blue  
03 = Dark Gray  
00 = None  
LC = Light Curtain

# Online Product Configurators

At WWW.ADVMG.COM You can find different product configurators to help with your design for Custom Panels, Doors With Interlocks and Push Button Options, and Configurable Wire Way Mounts

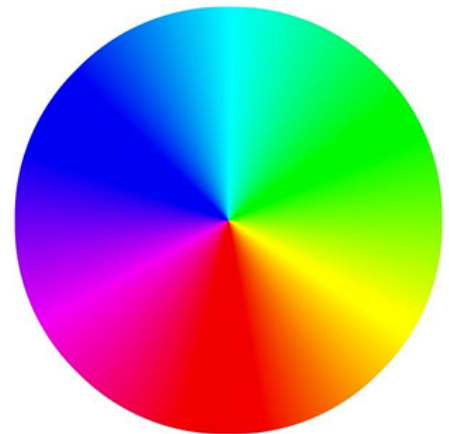


Custom designed panels and posts  
straight from the factory



## NEED A CUSTOM COLOR GUARDING?

No worry! We do all our own powder coating in-house and can provide you with the custom colors you need!





1122 E. 13<sup>th</sup> St.  
Hibbing, MN 55746  
[www.advmgs.com](http://www.advmgs.com)  
[info@advmgs.com](mailto:info@advmgs.com) (218) 389-7559



**Evolution Motion Solutions**  
13835 Senlac Dr, Farmers Branch, TX 75234  
800-569-9801  
[www.evolutionmotion.com](http://www.evolutionmotion.com)