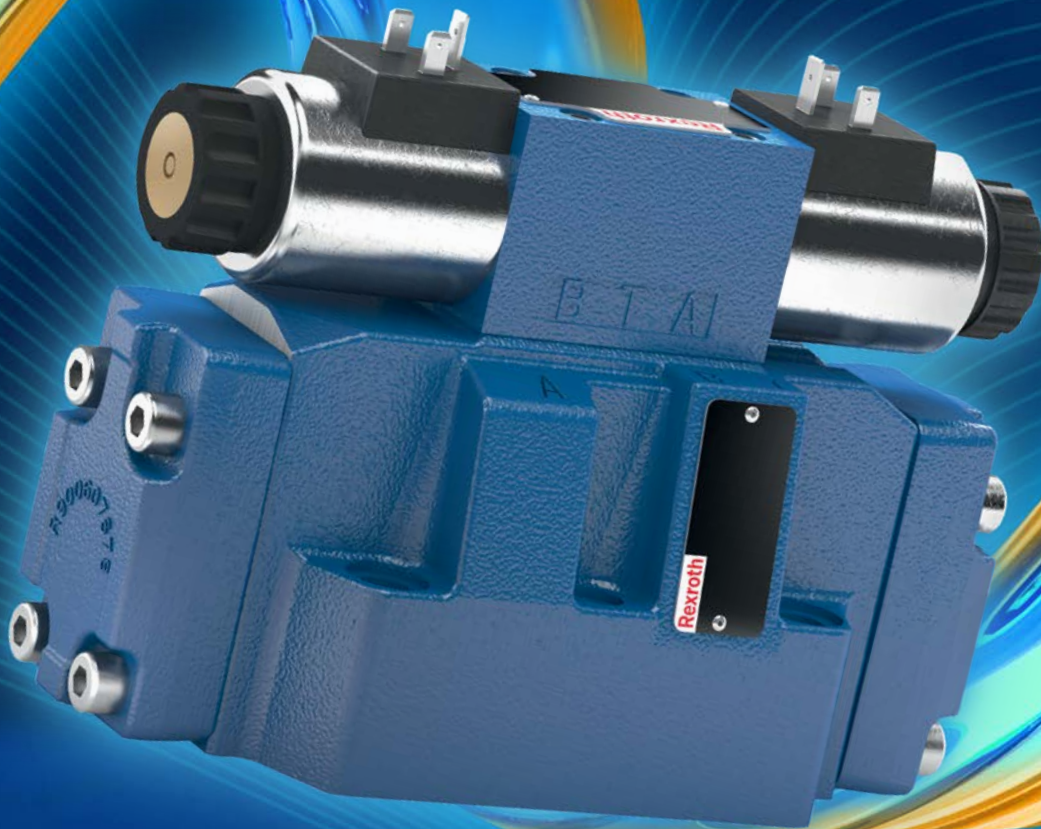


# Legacy Strength and Modern Performance Traditional Valves Still Matter



**As digital hydraulics deliver new capabilities, foundational valve technology remains critical for reliability, safety, and lifecycle value. This whitepaper explores why proven valves like the 4 WH 10–32 series continue to play a vital role in modern hydraulic systems.**

**Digitalization, IoT integration, and energy efficiency are transforming hydraulic systems. Yet, rising downtime costs, maintenance demands, and environmental considerations mean reliability cannot be sacrificed. Many new systems overlook this, risking performance and increasing lifecycle costs.**

## VALVE CORE FUNDAMENTALS

Reliable directional and pressure-relief control is essential. Poppet valves provide leak-free shutoff, fast response, and robustness. Poorly engineered valves can fail under stress, causing costly maintenance and operational disruption.

## THE 4 WH 10-32-32 SOLUTION

The 4 WH series exemplifies decades of Bosch Rexroth engineering. Its robust design, durable materials, and field-proven reliability make it ideal for demanding applications. By incorporating these valves, operators reduce downtime, maintenance, and total lifecycle costs.

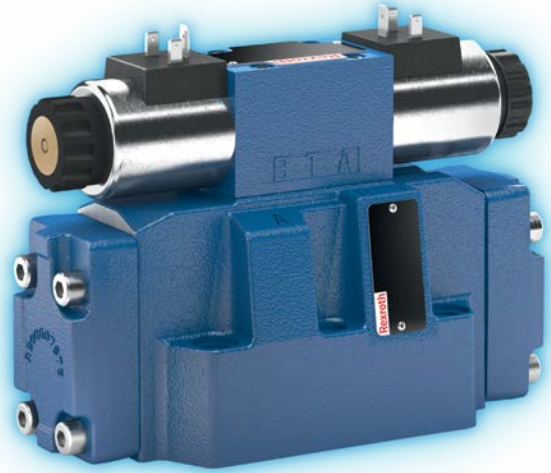
## HYBRID SYSTEMS: BRIDGING LEGACY & DIGITAL INNOVATION

T WH-style valves act as a reliable backbone in hybrid systems. They integrate seamlessly with digital modules, IoT-enabled monitoring, and variable-speed drives — ensuring a strong foundation while enabling advanced capabilities.

## SUSTAINABILITY & LIFECYCLE VALUE

Long-lasting valves reduce part replacements, prevent leaks, and minimize maintenance resources, lowering environmental impact while improving cost efficiency.

A heavy-duty mobile hydraulic application operating in rugged terrain benefits from 4 WH valves. Compared to standard valves, maintenance intervals are longer, leaks are minimized, and total lifecycle costs decrease significantly.



## WHAT THIS MEANS FOR MANUFACTURERS

Even amid digital transformation, high-quality, traditional valves remain central. For manufacturers and operators seeking reliability, hybrid solutions that combine proven hardware with digital enhancements offer the best balance.

With decades of hydraulic expertise, Bosch Rexroth provides global support and innovative solutions. Contact us for consultation, spec sheets, or custom variants.

### Bosch Rexroth Corporation

Website: [www.boschrexroth-us.com](http://www.boschrexroth-us.com)

Telephone: (800) REXROTH

(800) 739-7684

Email: [info@boschrexroth-us.com](mailto:info@boschrexroth-us.com)

### Evolution Motion Solutions

13835 Senlac Dr, Farmers Branch, TX 75234

800-569-9801

[info@evolutionmotion.com](mailto:info@evolutionmotion.com)

[www.evolutionmotion.com](http://www.evolutionmotion.com)



[www.facebook.com/BoschRexrothUS](https://www.facebook.com/BoschRexrothUS)



[www.twitter.com/BoschRexrothUS](https://www.twitter.com/BoschRexrothUS)



[www.youtube.com/BoschRexrothUS](https://www.youtube.com/BoschRexrothUS)



[www.linkedin.com/company/bosch-rexroth-us/](https://www.linkedin.com/company/bosch-rexroth-us/)

USH00522/01.2026

© Bosch Rexroth Corporation 2026

Subject to change without notice.

ALL RIGHTS RESERVED

