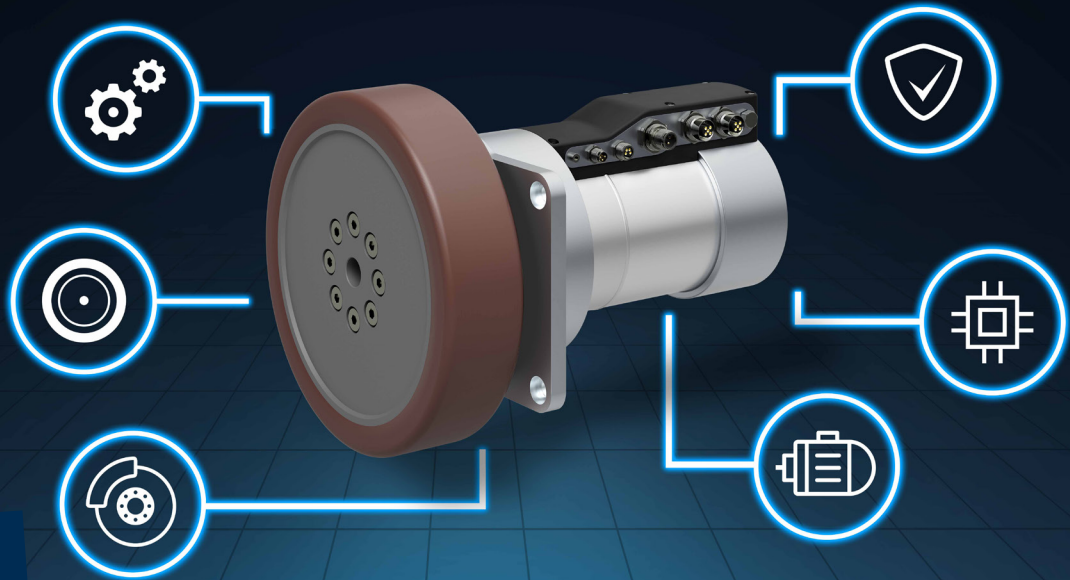


## Rexroth ROKIT Motor

### Your Safety-Certified Wheel Drive

### for AGV/AMR



**SIL2  
PLd**  
Functional Safety

Safety over  
**EtherCAT**

The ROKIT Motor from Bosch Rexroth is the ideal wheel drive unit for your mobile robots. The highly integrated plug-and-drive solution enables fast commissioning and flexible integration. With state-of-the-art technology, precise control and minimal installation effort, the drive system offers outstanding performance in a compact design. Thanks to certified functional safety through FSoE (FailSafe over EtherCAT), it meets all necessary safety requirements.

#### Highly integrated plug-and-drive solution

The ROKIT Motor combines wheel, gearbox, brake, motor, encoder and Elmo Motion Controller in a compact all-in-one solution. Perfectly suited for use in your mobile robots. The plug-and-drive design reduces cabling and assembly effort and lowers integration and maintenance complexity.

#### Maximum safety with minimum effort

The FSoE-based wheel drive ensures safe data transmission and meets safety standards up to PLd/SIL2. The integrated motion controller makes it easy to implement safety functions.

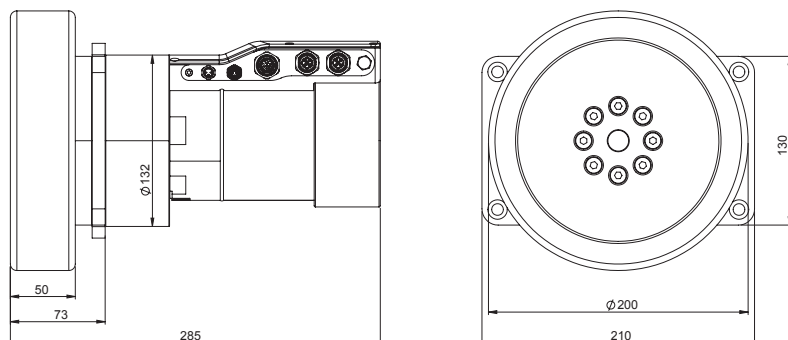
#### FUNCTIONAL SAFETY THANKS TO FSOE

- ▶ Entire module is fully FSoE-based
- ▶ Standardized, future-proof interface
- ▶ Safety functions up to safety level PLd/SIL2 can be easily integrated
- ▶ Maximum openness for the safety requirements of tomorrow

#### REDUCE YOUR DEVELOPMENT EFFORT

- ▶ Plug-and-drive design
- ▶ Less development effort
- ▶ Minimal cabling effort
- ▶ Easy installation and maintenance
- ▶ Small installation space
- ▶ Wide voltage range for battery-powered vehicles
- ▶ Compatible with ctrlX AUTOMATION solutions

# ROKIT Motor Technical Data



General	Specification
IP protection class	IP54
Lifetime	95,000 km
Safety standard	ISO 13849 PLd SIL2
Temperature range	0 to 40 °C
Payload	500 kg
Vibration resistant	According to DIN EN 60068
Shock resistant	According to DIN EN 60068
Wheel	Specification
Wheel diameter	200 mm
Nominal drive speed	2 m/s
Nominal torque	30 Nm
Peak torque	70 Nm
Nominal power	800 W
Peak power	1,000 W
Material	Besthane 92 Shore A
Gear box	Specification
Type	Planetary
Safety and parking brake	Specification
Wheel holding torque	100 Nm
Active at STO (safe torque off)	Yes
Motor	Specification
Type	PMSM, brushless
Encoder	Specification
Integrated safety	Yes
Positioning accuracy wheel	50 arcmin
Motion controller	Specification
Safe torque off	SIL2 and PLd over FSoE (FailSave over EtherCAT)
EtherCAT	EtherCAT with FSoE, CoE with DS402 profile



## Have we sparked your interest?

Discover the ROKIT Motor at [www.boschrexroth.com/rokit-motor](http://www.boschrexroth.com/rokit-motor) or contact us at [robotics@boschrexroth.de](mailto:robotics@boschrexroth.de).