

# rexroth

SWEET 16

## Profiled Rail & Runner Blocks

**IN STOCK. SHIPPED FAST. COMPETITIVE PRICING.**

Evolution Motion Solution's exclusive Profiled Ball Rails and Runner Blocks program keeps Bosch Rexroth rails and blocks in stock, available to cut-to-size and shipped fast with 2-week standard delivery. 5-day and 2-day delivery options available.



High level of rigidity in all directions also permits use as an individual block. Mounting holes on flanged bearings can be used with taps or as through holes

### 20 MILLION METER RELUBRICATION INTERVAL

Minimal lubrication consumption due to an integrated slow-release reservoir. Rolling elements are wiped with oil every pass

Guide rails are available with a bottom mount option or with rail seal cover strip

Rail has dual reference edges

Rolling elements are retained when bearing is removed from rail

Dimples in tops of end caps allow for lubrication through customer mounting plate

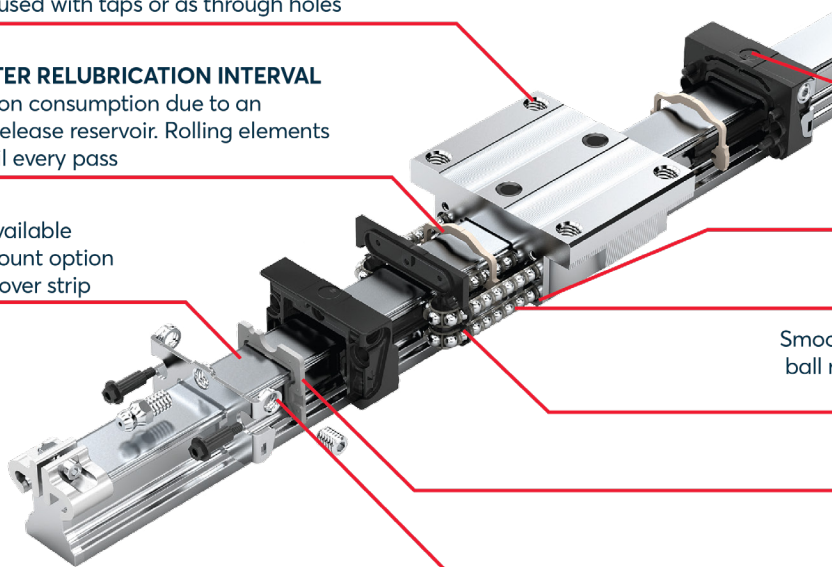
Optimized entry-zone geometry and the high number of balls per track increase L10 dynamic life

Ball chain available as a quieter option, 10 m/s speed rated

Smooth light running due to optimized ball recirculation and ideal tracking of balls 5 m/s speed rated

Integral all-around sealing including longitudinal seals

Lubrication access from 6 points via threaded metallic end caps



## Complimentary Products



**Bosch Rexroth**  
 • EMC



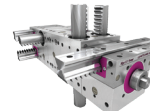
**Bosch Rexroth**  
 • Modules



**Bosch Rexroth**  
 • Screw Drives



**Nexen Zimmer**  
 • Rail Brakes



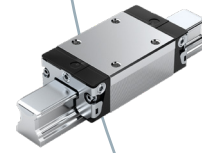
**Leantechnik**  
 • Gear Racks

800-569-9801 • [info@evolutionmotion.com](mailto:info@evolutionmotion.com)

[evolutionmotion.com/products/bosch-rexroth-profiled-ball-rails-runner-blocks](http://evolutionmotion.com/products/bosch-rexroth-profiled-ball-rails-runner-blocks)



## Guaranteed Inventory

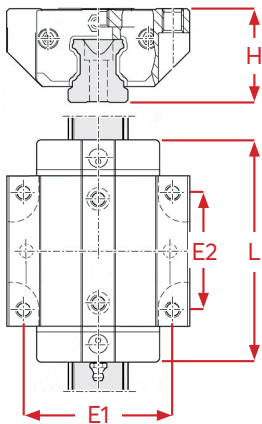
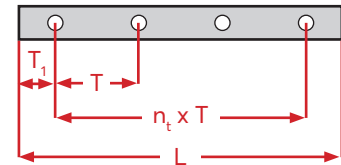


SIZE	RAIL PART NO.	T	PRELOAD	FLANGED CARRIAGE PART NO.	SLIMLINE CARRIAGE PART NO.
15	1605-104-31	60	2%	1651-114-20	1622-114-20
20	1605-804-31	60	0%	1651-894-20	1622-894-20
25	1605-204-31	60	0%	1651-294-20	1622-294-20
			2%	1651-214-20	1622-214-20
30	1605-704-31	80	0%	1651-794-20	N/A
			2%	1651-714-20	1622-714-20
35	1605-304-31	80	0%	1651-394-20	N/A
			2%	1651-314-20	1622-314-20
45	1605-404-31	105	0%	1651-494-20	N/A
			2	1651-414-20	N/A

## Critical Ball Rail Dimensions

### \*LOW DRAG OPTIONS STOCKED - CALL FOR PART NUMBERS

- Specify Length (L) and (T1) Dimensions When Ordering
  - i.e. 1605-204-31-1000 (T1=20)
- Dimensions Listed In mm Normal Accuracy
  - 0.040 mm tolerance height
  - 0.100 mm tolerance ref edge
- Rail Lengths Up To 3,800 mm



SIZE		H	L	E1	E2	TAP
15	Flanged 1651	24	58.2	38	30	M5
	Slimline 1622	24	58.2	26	26	M4
20	Flanged 1651	30	75.0	53	40	M6
	Slimline 1622	30	75.0	32	36	M5
25	Flanged 1651	36	86.2	57	45	M8
	Slimline 1622	36	86.2	35	35	M6
30	Flanged 1651	42	97.7	72	52	M10
	Slimline 1622	42	97.7	40	40	M8
35	Flanged 1651	48	110.5	82	62	M10
	Slimline 1622	48	110.5	50	50	M8
45	Flanged 1651	60	137.6	100	80	M12
	Slimline 1622	60	137.6	60	60	M10



800-569-9801 • [info@evolutionmotion.com](mailto:info@evolutionmotion.com)  
[evolutionmotion.com](http://evolutionmotion.com)