

# Display Gauge - Nexus

## Model #LDCJ1939-4BT-AF

The Nexus J1939 controller was designed to provide a cost-effective solution for OEM applications. Whether controlling hydraulic valves, engine operations, or monitoring J1939 parameters, the LDC provides substantial I/O and a multifunction display, allowing ultimate flexibility to fit any application.



## Applications

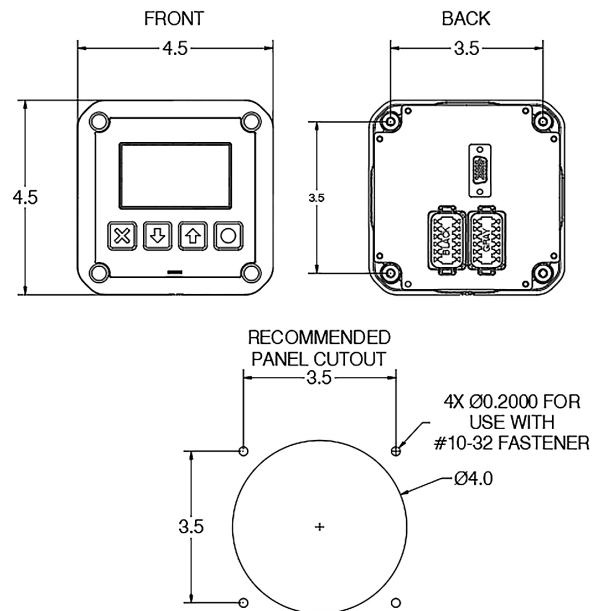
- Complete Machine Control
- J1939 Engine Traffic Monitor
- Hydraulic Control Operation
- Tier 4 Final Engine Control

### GENERAL SPECIFICATIONS

Weight	8 oz.
Operating Temp.	-40°-170°F (-40°-76°C)
Ingress Protection	IP 67
Voltage Supply	9-32 VDC
Current Consumption	Outputs OFF – 50mA (12 VDC) 30mA (24 VDC)
CAN Protocol	SAE J1939

### USER INTERFACE

Display	400x240 pixel 2.83" Transflective Sunlight Readable
Backlight	Yes
LEDs	Customizable Red, Blue, Green, and Amber
	Warning and Shutdown Indicators for J1939 Engine Faults
Keypad	4 Position Tactile IP67 Sealed, Rated to 100,000 Cycles
Connection	2 x 12 Pin Deutsch Connectors



### SPECIFICATIONS

Voltage Inputs	
Number	Up to 16 (7 x Wide Band; 9 x Narrow)
Signal Range	Wide: 0-27 VDC, Narrow: 0-10 VDC
Max Voltage	32 VDC
Resolution	Wide: 6.7 mV/bit, Narrow: 2.44 mV/bit
Frequency Inputs	
Number	2
Frequency Range	2-20,000 Hz
Min. Signal Voltage	2 VAC
Resistive Inputs	
Number	1
Signal Range	0-1,000 $\Omega$

### OTHER SPECIFICATIONS

PWM	
Number	Up to 6
Type	High Side Switching (Hydraulic Solenoids, Horns, Lights, Relays, etc)
Max Load	3.5 Amps continuous per output
PWM Frequency	31-500 Hz
Duty Cycle Resolution	0.10%
Protection	Over Load Shutdown & Open Load Detection
Relay Output	
Number	1
Type	Low Side
Max Load	500 mA

