

# In Stock. Shipped Fast. Competitive Pricing.

Evolution Motion Solutions' exclusive pneumatics program stocks and ships/delivers the most common Emerson AVENTICS FRLs at a competitive price.



## Filters & Regulators

### COALESCING FILTER/REGULATOR 0.3 MICRON

1/4"	8651ACDP2FA00GN	Series 651
3/8"	8652ACDP3FA00GN	Series 652
1/2"	8652ACDP4FA00GN	Series 652
3/4"	8653ACDM5FA00GN	Series 653
1"	8653ACDM6FA00GN	Series 653

### DIVERTER BLOCK

1/4"	8651AD002TA0000	Series 651
1/2"	8652AD004TA0000	Series 652
1"	8653AD006TA0000	Series 653

### PARTICULATE FILTER 5 MICRON

1/4"	8651ABBP2JA000N	Series 651
3/8"	8652ABBP3JA000N	Series 652
1/2"	8652ABBP4JA000N	Series 652
3/4"	8653ABBP5JA000N	Series 653
1"	8653ABBP6JA000N	Series 653

## Filter Accessories

### END PLATE KIT

1/4"	T651AT504959001	Series 651
1/2"	T652AT502468001	Series 652
1"	T653AT507292001	Series 653

### LOW PROFILE GAUGE 175 PSI NBR

1/4"	M699AG438047004	Series 651
3/8"	M699AG438047004	Series 652
1/2"	M699AG438047004	Series 652
3/4"	M699AG438047004	Series 653
1"	M699AG438047004	Series 653

### SIDE MOUNTING BRACKET KIT

1/4"	P651AT503860001	Series 651
3/8"	P652AT503860002	Series 652
1/2"	P652AT503860002	Series 652

### REGULATOR

1/4"	8651AR002FA00GO	Series 651
3/8"	8652AR003FA00GO	Series 652
1/2"	8652AR004FA00GO	Series 652
3/4"	8653AR005FA00GO	Series 653
1"	8653AR006FA00GO	Series 653

### SHUT OFF ISOLATION VALVE

1/4"	8651A3M02F11100	Series 651
3/8"	8652A3M03011100	Series 652
1/2"	8652A3M04F11100	Series 652
3/4"	8653A3M05F11100	Series 653
1"	8653A3M06011100	Series 653

### LUBRICATOR

1/2"	8652ALOP40A0000	Series 652
------	-----------------	------------

### PARTICULATE FILTER/REGULATOR 5 MICRON

1/4"	8651APBP2FA00GN	Series 651
------	-----------------	------------

3/4"	P653AT503860003	Series 653
------	-----------------	------------

1"	P653AT503860003	Series 653
----	-----------------	------------

### BDY-TO-BDY CON KIT

1/4"	P651AT504958001	Series 651
3/8"	P652AT502466001	Series 652
1/2"	P652AT502466001	Series 652
3/4"	P653AT507291001	Series 653
1"	P653AT507291001	Series 653

### 5 MICRON FILTER ELEMENT

1/4"	M651AE434063001	Series 651
3/8"	M652AE433582001	Series 652
1/2"	M652AE433582001	Series 652
3/4"	M653AE439490001	Series 653
1"	M653AE439490001	Series 653

3/8"	8652APBP3FA00GN	Series 652
1/2"	8652APBP4FA00GN	Series 652
3/4"	8653APBP5FA00GN	Series 653
1"	8653APBP6FA00GN	Series 653

### COALESCING FILTER 0.3 MICRON

1/4"	8651AFDP2HA000N	Series 651
1/2"	8652AFDP4HA000N	Series 652
3/4"	8653AFDP5HA000N	Series 653
1"	8653AFDP6HA000N	Series 653

### QUICK EXHAUST VALVE

1/4"	8651A5S620111F1	Series 651
3/8"	8652A5S630111F1	Series 652
1/2"	8652A5S640111F1	Series 652
1"	8653A5S66F111F1	Series 653

### SLOW START/QUICK EXHAUST VALVE

1"	8653A6S66F111F1	Series 653
----	-----------------	------------

### GAUGE PORT ASSEMBLY

1/4"	M699AG440510001	Series 651
3/8"	M699AG440510001	Series 652
1/2"	M699AG440510001	Series 652
3/4"	M699AG440510001	Series 653
1"	M699AG440510001	Series 653

### BONNET BRACKET KIT

1/4"	P651AT503861001	Series 651
3/8"	P652AT503861002	Series 652
1/2"	P652AT503861002	Series 652

248-373-1600 • [info@evolutionmotion.com](mailto:info@evolutionmotion.com)

[evolutionmotion.com/products/emerson-aventics-pneumatic-stocking-program](http://evolutionmotion.com/products/emerson-aventics-pneumatic-stocking-program)



## Filter Accessories

### MUFFLER/SILENCER

1/4"	M2MN	Series 651
3/8"	M3MN	Series 652
1/2"	M4MN	Series 652
3/4"	M5MN	Series 653
1"	M6MN	Series 653

### 40 MICRON FILTER ELEMENT

1/4"	M651AE434063003	Series 651
3/8"	M652AE433582003	Series 652
1/2"	M652AE433582003	Series 652
3/4"	M653AE439490003	Series 653
1"	M653AE439490003	Series 653



## 500 Series

### 502 SERIES BLANK PLATE

Blank Station Kit: P502AB431813001

### 502 SINGLE SANDWICH PRESSURE REGULATOR

R502ARS11JA0010

### 503 SERIES BLANK PLATE

Blank Station Kit: P503AB428359001

### 502 SERIES VALVE/24 VDC

2 Position 4-Way (5/2) Sng Solenoid:

R502A1B10MA00F1

2 Position 4-Way (5/2) Dbl Solenoid:

R502A1B40MA00F1

3 Position 4-Way (5/3) Open Ctr.:

R502A1B50MA00F1

3 Position 4-Way (5/3) Blocked Center:

R502A1B60MA00F1

Dual 3-Way Normally Closed:

R502A2BD0MA00F1

### 502 SINGLE SANDWICH PRESSURE REGULATOR

R502ARD11JA0010

### 502 SERIES END PLATE KIT W/MUFFLER

502 Series End Plate Kit:

8502AK431477008

### PRESSURE RANGE INDICATOR KIT

1/4"	M699AG500179001	Series 651
3/8"	M699AG500179001	Series 652
1/2"	M699AG500179001	Series 652
3/4"	M699AG500179001	Series 653
1"	M699AG500179001	Series 653

### WALL MOUNTING BRACKET

1/4"	P699AT502467001	Series 651
3/8"	P699AT502467001	Series 652
1/2"	P699AT502467001	Series 652
3/4"	P699AT502467001	Series 653
1"	P699AT502467001	Series 653

### 503 SINGLE SANDWICH PRESSURE REGULATOR

R503ARS11JA0010

### 503 SERIES END PLATE KIT W/MUFFLER

502 Series End Plate Kit:

8502AK431477008

### 503 SERIES VALVE/24 VDC

2 Position 4-Way (5/2) Sng Solenoid:

R503A1B10MA00F1

2 Position 4-Way (5/2) Dbl Solenoid:

R503A1B40MA00F1

3 Position 4-Way (5/3) Open Ctr.:

R503A1B50MA00F1

3 Position 4-Way (5/3) Blocked Center:

R503A2B60MA00F1

Dual 3-Way Normally Closed:

R503A2BD0MA00F1

### 502 M12 INDIVIDUAL SUBBASE

Individual Subbase with 1/4 NPT Ports:

8502AA3A2M56Y20

### 502 SERIES 2-STATION MANIFOLD SUBBASE

Subbase with 1/4 Push-In Fittings:

K502AMM22MA0010

### 503 M12 INDIVIDUAL SUBBASE

Individual Subbase with 3/8 NPT Ports:

8503AA3A3M56Y20

### 503 SERIES 2-STATION MANIFOLD SUBBASE

Subbase with 3/8 Push-In Fittings:

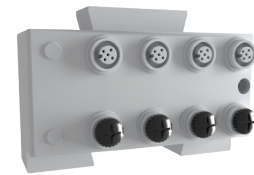
K503AMM23MA0010

### STANDARD FLOW CONTROL

1/4"	2FCRN	Series 651
3/8"	3FCRN	Series 652
1/2"	4FCRN	Series 652



Evolution also has a complete line of inch fittings and tubing in stock.



## G3 Series Accessories

### VALVE DRIVER MODULE

P599AE508827002

### TERMINATOR MODULE

240-245

### JUMPER CLIP

240-179

### AUTO RECOVERY MODULE (ARM)

240-383

### 25 PIN FEMALE CABLE

22 AWG-UNSHIELDED

SC2505MCX000000



248-373-1600 • [info@evolutionmotion.com](mailto:info@evolutionmotion.com)

[evolutionmotion.com](http://evolutionmotion.com)

