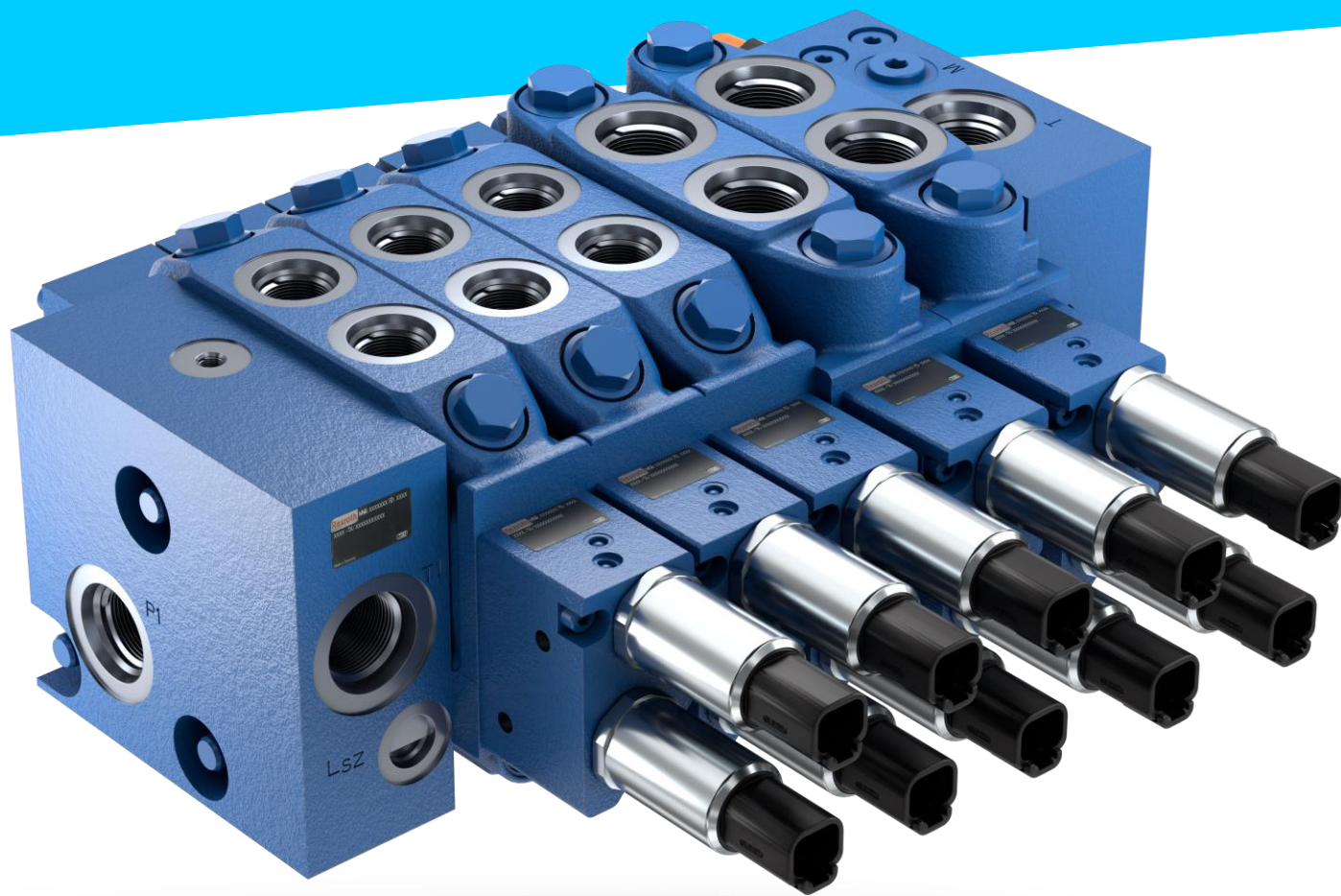


# Valve Platform RM10 & RM15-MPP

## Medium Pressure Platform

Load sensing pre-compensated directional control valve

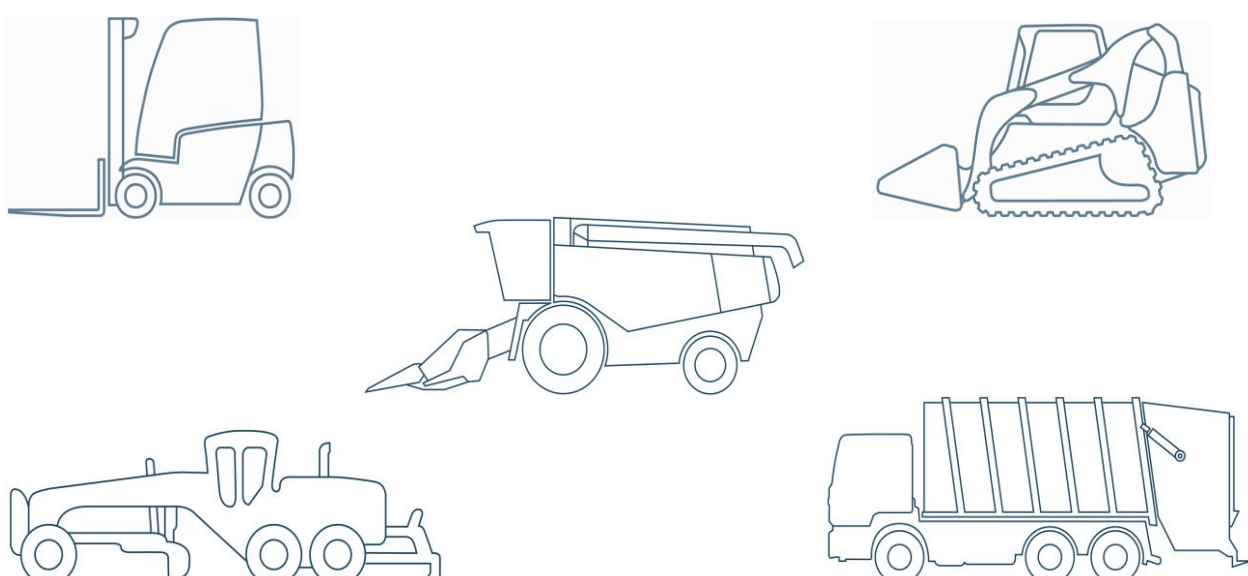


The mobile machine market demands flexible and high performing load sensing solutions, which are key for future machine design. Bosch Rexroth's pre-compensated load sensing design makes the platform easily configurable for machine manufacturers. The Rexroth RM10 & RM15-MPP (Medium Pressure Platform) is a general-purpose valve platform that provides control solutions to a large range of medium duty machines for on- and off-highway: Snow removal and waste handling trucks, skid steer and compact wheel loaders as well as fork-lift trucks, graders, combine harvesters and many more.

### CUSTOMER BENEFITS

- Flexible and modular design
- More precise function control for operators
- Simplified setup process for the control block
- Compact dimensions
- High operational efficiency reduces energy consumption
- Less hydraulic components necessary
- Compatibility to M4-12 and EDG family for specific customer needs

### APPLICATIONS



### FUNCTION AND BENEFITS

#### Flexible and modular design

Bosch Rexroth's RM MPP mobile valve portfolio has a modular design and can be easily adapted to customer needs. It ranges from the RM10 with up to 90 lpm to the RM15 with up to 150 lpm and shares the same flange or mounting interface with the M4-12. Beyond that the RM MPP family has the standard option to be combined with more compact valves from the ED/EDG family for up to 40 lpm. This wide assortment ensures cross functionality for all flow ranges on a machine.

#### Precise function control and simplified setup process

The Rexroth RM Medium Pressure Platform features an extended spool stroke of 8 mm. This leads to an improved operator experience through finer and more precise function controllability with the joystick, while executing defined movements. The extended spool stroke also allows easier and simplified machine setup and calibration. This way the machine manufacturer benefits from an easier electronics setup for the control block.

#### Compact dimensions

The RM10 section was designed with a reduced width by 4 mm versus the RM15 to ensure least possible required length. The compact valve design enables manufacturers of mobile working machines to use limited installation space efficiently.



Valve Platform RM10 & RM15-MPP

Load sensing pre compensated directional control valve

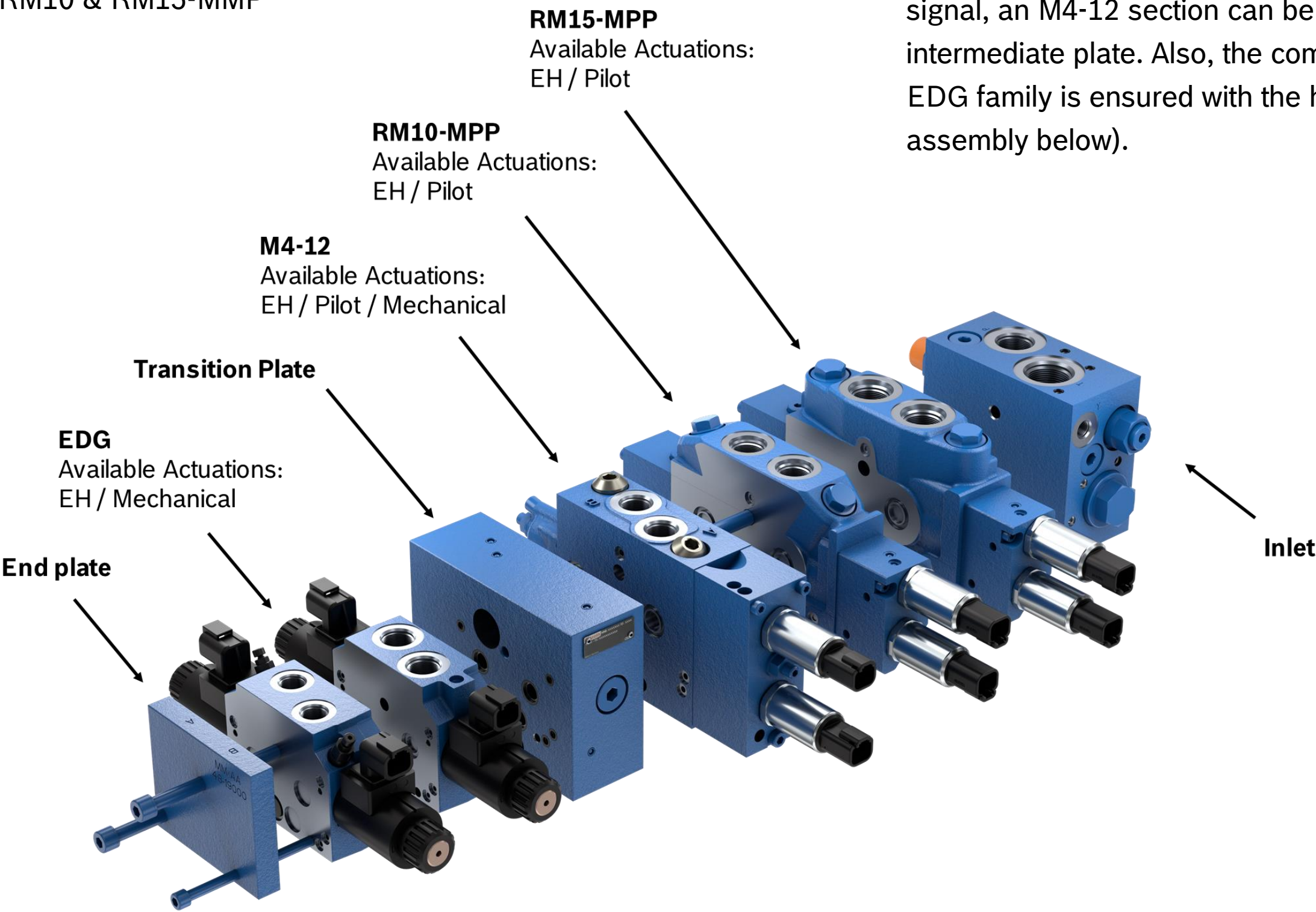
TECHNICAL DATA

Valve Platform RM10 & RM15-MPP	
Variants:	RM10 & RM15-MPP
Version:	Standard
Pump Pressure:	280 bar (4050 psi)
Work Port Pressure:	320 bar (4640 psi)
Flow:	Inlet: 200 lpm (53 gpm) RM10-MPP: up to 90 lpm (24 gpm) RM15-MPP: up to 150 lpm (40 gpm)
Available Actuations:	Proportional Electric Hydraulic Pilot
Data Sheet:	64955

EXPLORE MORE



RM10 & RM15-MMP



Pre-compensated Valve Platform (PcVP):  
Integration of RM MPP with M4 and EDG Valve family.

High operational efficiency reduces energy consumption

The RM10 & RM15 Medium Pressure Platform from Bosch Rexroth is designed to increase energy efficiency of the hydraulic controls. Multiple features have been included into the platform like the section specific load sensing relief to optimize controllability. The internal oil channels of the RM are designed to reduce pressure drop to only 5 bar.

Less hydraulic components necessary

Cutting edge engineering reduces leakage over the main spool to only 10 cc/min at 100 bar. This feature means that no additional counterbalance valves on the main control block are needed. The result is an overall smaller package size and a smaller number of components.

Compatibility to M4-12 family for specific customer needs

For most customer applications, the RM10 & RM15-MPP is the right fit. In case of additional functionality or specific requirements, like higher pressure or A and B specific load sense signal, an M4-12 section can be used without any transition or intermediate plate. Also, the compatibility with Bosch Rexroth’s EDG family is ensured with the help of a transition plate (see assembly below).

Bosch Rexroth Corporation – Corporate Headquarters  
14001 South Lakes Drive  
Charlotte, NC 28273  
Phone (800) 739-7684  
info@boschrexroth-us.com  
www.boschrexroth-us.com

For your local contact person here:  
www.boschrexroth-us.com/contactus

© Bosch Rexroth Corporation 2022. All rights reserved, also regarding any disposal, exploitation, reproduction, editing, distribution, as well as in the event of applications for industrial property rights.

The data specified within only serves to describe the product. No statements concerning a certain condition or suitability for a certain application can be derived from our information. The information given does not release the user from the obligation of own judgment and verification. It must be remembered that our products are subject to a natural process of wear and aging.